

Store space is limited . . . Make the Most of It!

RED TROLLEY

Model #IT1854-14.5N

Our customers love this superior trolley! It's ergonomic design saves injuries, reduces accidents, and decreases costs.

Operators also like the better efficiency, and the reduced fatigue let's them get more done per day.

The most valuable benefit reported by Frito Lay managers is increased employee moral! They report great ROI from the trolley, and wouldn't be without it in the warehouse.



How To Use



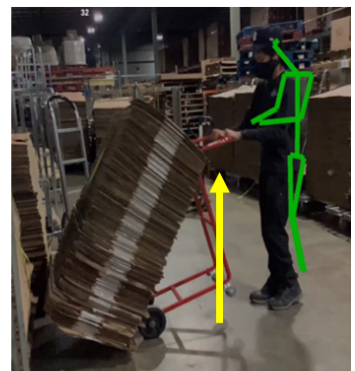
Slide the nose of the trolley into the KD rack. You may need to lift the back wheels off the ground depending on the height of the rack.



Gently move the nose of the trolley up and down; slowly slide the stack of KDs onto the trolley. Keep a neutral spine and avoid any jerking motions with your back or shoulders.



Once the load of KDs is on the cart, place all four wheels on the ground and push the cart to the desired destination.



To remove product from the cart: lift the handle upwards keeping a neutral spine, then slowly tilt the trolley to place the stack on the ground.