

Store space is limited . . . Make the Most of It!

ALUMINUM SNACK FOOD TRUCK

Model #SFT811

Move bulky loads in fewer trips with our lightweight, easy-to-use aluminum hand truck.

Overall dimensions: 17" wide x 61 1/2" tall

Weight: 28 lbs.

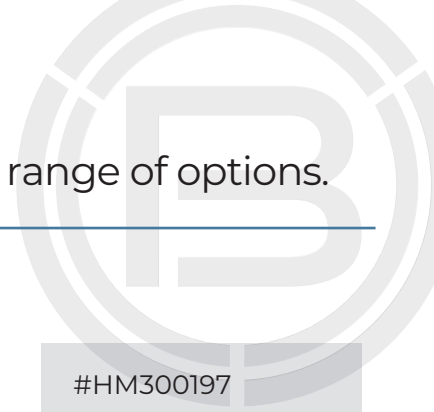
Capacity (with nose extended) 80 lbs.

Capacity (with nose folded) 500 lbs.



shown
with
shock
cord





Customize your **Aluminum Snack Food Truck** with our range of options.

Handles

#11-301000



Ergonomically designed for comfort and easy operation

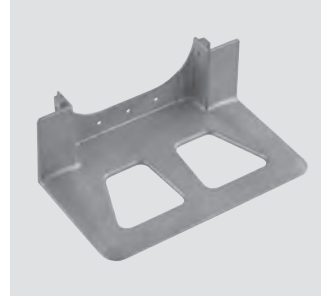
#12-30100



U-Brace for extra load support

Noses

#AM300200



Die-cast magnesium
14" wide x 7 1/2" deep

#HM300197



Die-cast magnesium
14" wide x 12" deep

Wheels

#815-10815



8" mold-on rubber on die-cast magnesium hub with double-groove ball bearings. Hard puncture resistant rubber works well on smooth surfaces.



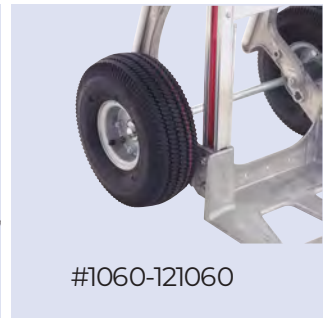
#830-10830/
#1030-101030

8" or 10" puncture resistant, shock absorbing, non-marking balloon cushion tires.

#1010-131010



10" puncture resistant foam tire with semi-precision bearings. Never goes flat! Performs like pneumatic tire, but doesn't require air!



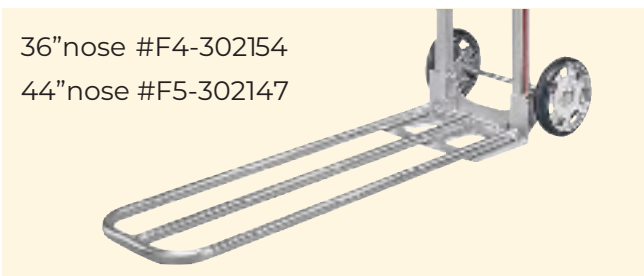
#1060-121060

10" pneumatic tube-tire, 4-ply rated. Sealed semi-precision bearings and corrosion-resistant hub. Excellent shock absorption.

Nose Extensions

36" nose #F4-302154

44" nose #F5-302147



Stair Climbers

#C5-86006



Cast magnesium slides with replaceable low-friction polymer skid bars. Tough and quiet.